

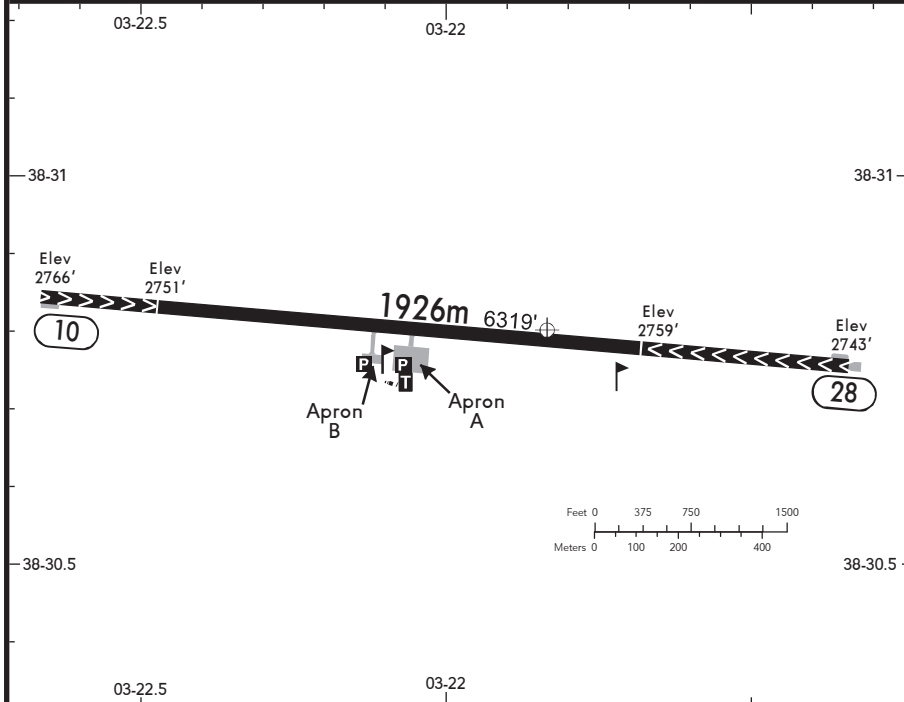
LEIZ
TORRE DE JUAN ABAD

12 NOV 21 (19-2)

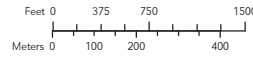
LA PERDIZ
SPAIN

BRIEFING STRIP™	LOCATION	RADIO	ADMITTED AIRCRAFT
	Elev 2753' /839m N38 30.8 W003 21.8	LA PERDIZ RADIO 118.825 ⁽¹⁾ (sp, en)	

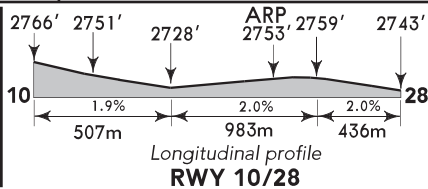
(1) 20 NM



SCALE 1:18000



RWY No	Dimension (m) - Surface	TORA (m)	LDA (m)	Strength	Lights
10 28	1926 x 30 Asphalt	1490 1676	1676 1490	68t AUW	---



Wind direction often changes: the pilot should always fly over the airport, check the wind and decide which RWY is the most suitable for landing. When wind permits, land on RWY 10 and TKOF on RWY 28. If RWY 28 is in use for landing, a 10° offset N of RWY centre line will keep the ACFT away from the obstacle located about 1 NM from THR 28.

After landing, the 180° turn should be done at the turn pad at the end of the RWY.

When entering Apron A, move very slowly and keep the ACFT well on the centre line. When on the parking, in

order to avoid problems with other planes or persons, apply power as little as possible until the ACFT is on the RWY. Apron B is a reserved parking area.

It is strongly recommended to be overhead the AD not later than 30 MIN before SS.

It is always important to contact AD OPR about 2 hr before ETD for weather conditions and to agree about the alternate AD if the landing becomes impossible. The nearest suitable ADs are Ciudad Real (LERL) or Granada (LEGR).

VFR Minima: VIS 5000m, ceiling 1500'. Flight plan to/from LEIZ: Y/Z. VFR transponder code 7000 (if not otherwise instructed by Seville ATC). Obtain local QNH from Seville ATC (Albacete QNH is generally very close to the one at La Perdiz).

The AD safety team will be in position only 30 MIN before ETA or ETD. For this reason, it is very important to be on time or immediately contact AD OPR if the ETA is earlier than 30 MIN.